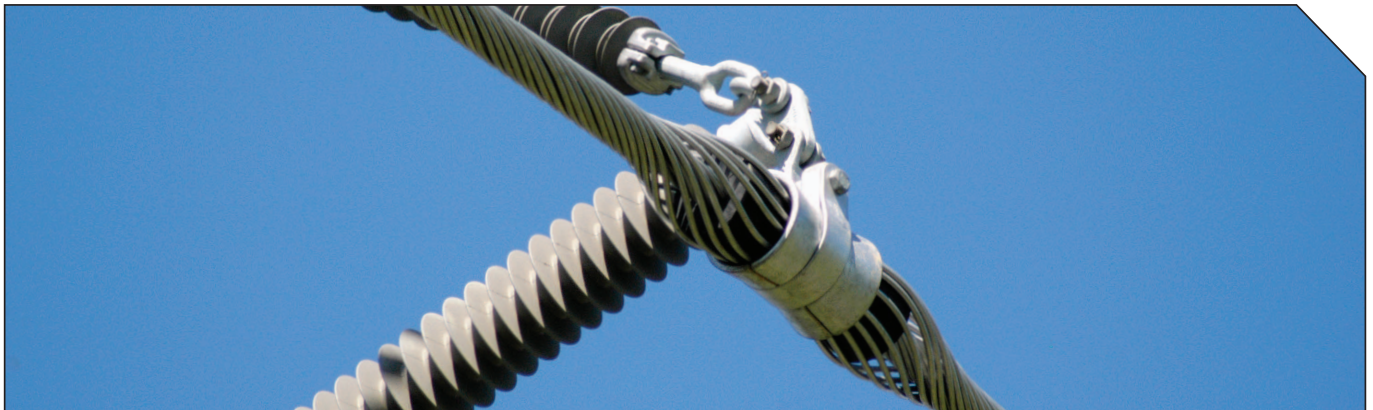


# ARMOR-GRIP Suspension



## General Recommendations



The Preformed Armor-Grip Suspension unit is intended for use on all material types and conductor constructions. Designed to reduce the static and dynamic stresses at the support point so that the conductor is protected against the effects of conductor motion. It also protects the conductor in the support area against impulse and power flash-over arcing.

The Preformed Armor-Grip Suspension is superior to bolted alternating combinations for protecting conductors from bending, compression stress and abrasion.

### Line Repairs:

Where a conductor has been damaged by a bolted clamp, The Preformed Armor-Grip Suspension can be used in the repair. All Armor-Grip Suspensions can be applied over Preformed type armor rods to restore and extend the life of the conductor.

### Line Angle:

The maximum recommended line angle for a single support AGS is 30°. For angles between 30° and 60°, the Armor-Grip Suspension Double Assembly is recommended.

For Application Procedures, visit the PLP website.  
[www.preformed.com.au](http://www.preformed.com.au)

### SAFETY CONSIDERATIONS

- This product is intended for a single (one-time) use and for the specified application, although it may be re-applied twice for retensioning within 90 days from initial installation.
- Do not modify this product in any way.
- This product is intended for use by qualified linesmen only.
- When working in the area of energised line with this product, extra care should be taken to prevent accidental electrical contact.
- For proper performance and personal safety, be sure to select the proper size PREFORMED™ products before application.
- PREFORMED™ products are precision devices. To ensure proper performance, they should be stored in cartons under cover and handled carefully.